

BEST CONNECTIVITY

The location convinces with its excellent integration into Munich's public transport system: direct access to S-Bahn (Suburban railroad) and U-Bahn (Subway) and bus ensure fast connections to the city center and surrounding area: less than 10 min. to the main station or Marienplatz.

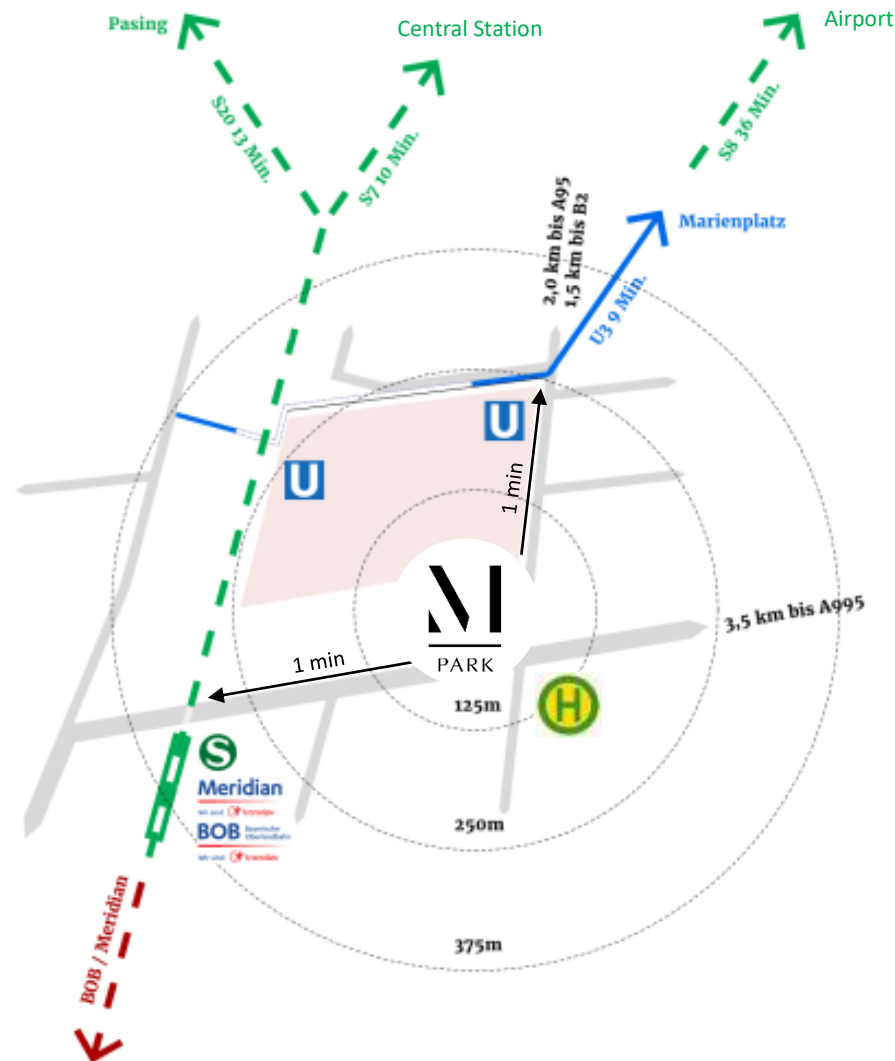
In addition, several bicycle connections tangent the property.

The Rupert-Mayer-Straße offers an optimal connection to the regional and supra-regional road network (Mittlerer Ring and Autobahnring in 3-5 min.).

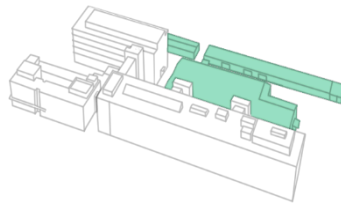
Numerous multinational companies have already settled around the M-Park on ~700,000 m² of office space. Within a few minutes walk from M-Park you can reach companies such as Apple, ASM, Brunata-Metrona, Comparex, Continentale, Daiichi Sankyo, Visions, Wacker, Government OBB, and many more.

The area guarantees the resident companies a wide gastronomic offer and shopping possibilities.

The Isar river with its extensive green banks and shallow water as well as the Hellabrunn zoo are only a few minutes away.

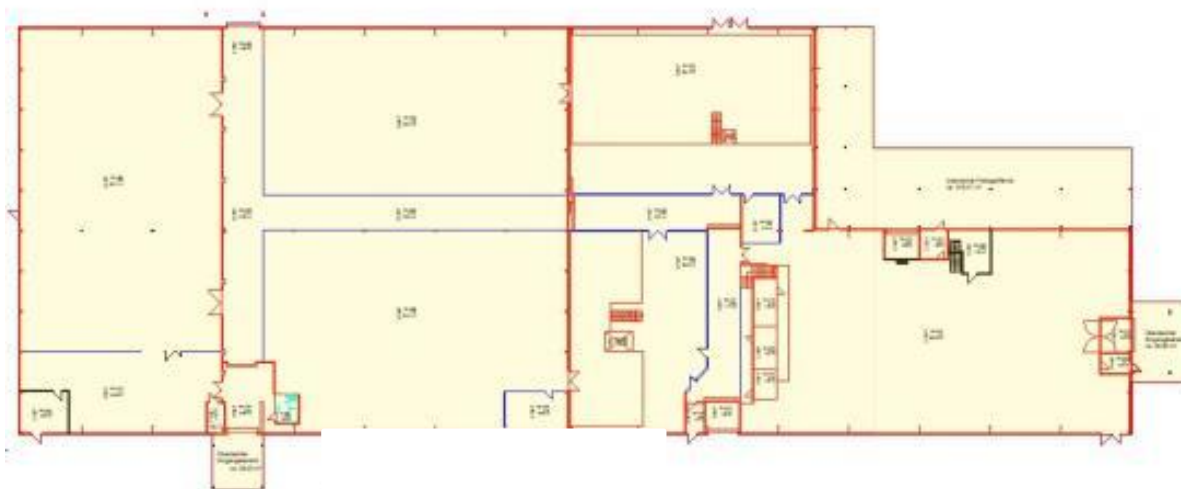


64.17



The multi-purpose halls are ideal as a transshipment point for last-mile logistics in the Munich metropolitan area. Due to the optimal transport connection, they can be optimally used as a city hub for the storage and shipping of any goods. The high quality high racks are part of the basic equipment of the areas.

Area ground floor



Area upper floor



GRA: approx. 4,816.5 m²

Rent per m² and month: 14.00 EUR plus operating and ancillary costs and VAT / open space optional

Type: Warehouse / Last Mile Logistics / City Warehouse / Light Industrial / Production

Height: approx. 4-8 meters

Floor: industrial concrete

M&P: total heated area

Areas: TBD

Internet: up to 10,000 MBit





PA 1
02

SSI SCHÄFER







FIDUCIARY
CAPITAL

FIDUCIARY CAPITAL GMBH

BAVARIAFILMPLATZ 7

82031 GRÜNWALD

T: +49.89.6499-1900

F: +49.89.6499-1901

GoTo@M-Park.Bayern

www.M-Park.Bayern

www.FidCap.De